

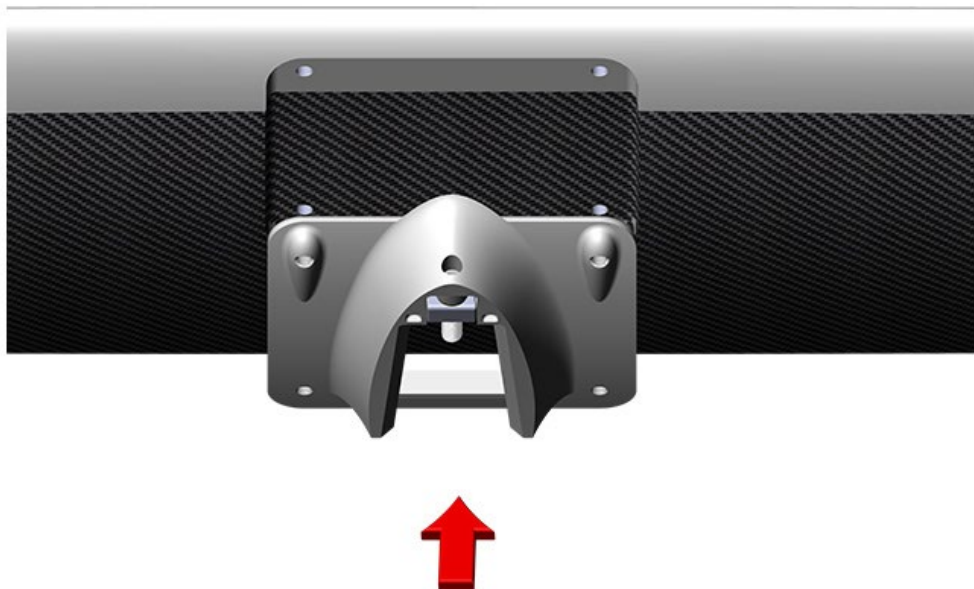
FIT SHOE ASSEMBLY TO REAR FOIL

This tutorial shows how to fit the Shoe Assembly to the Rear Foil for the XE-1.

1. Work Instruction – Fit Shoe Assembly to Rear Foil

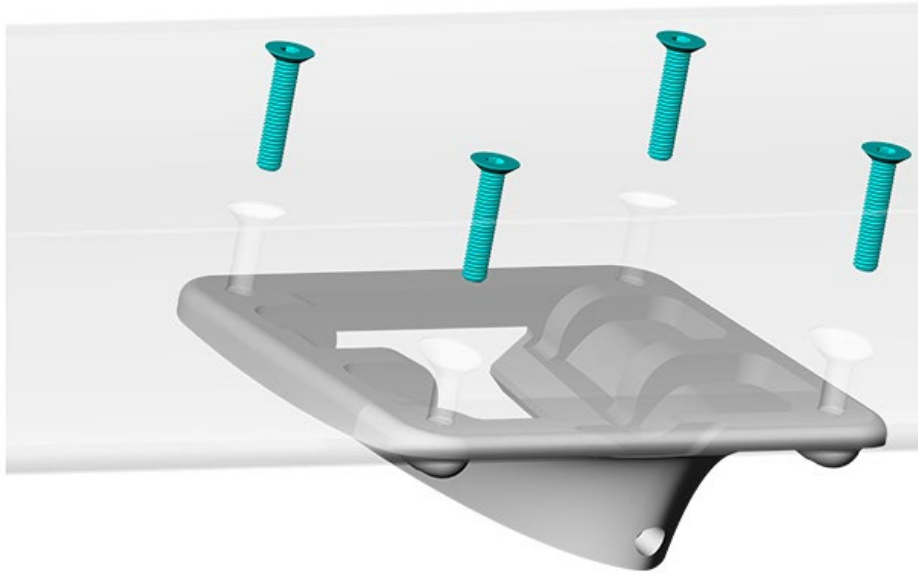
ID	Description	Task
	M4 Hex Key	Fasten M6 Countersink Head Foil Screws

1.1 Support the Rear Foil with the bottom side up and position the Shoe Assembly against the flat surface, with the holes aligning and rounded end facing forward as shown below.



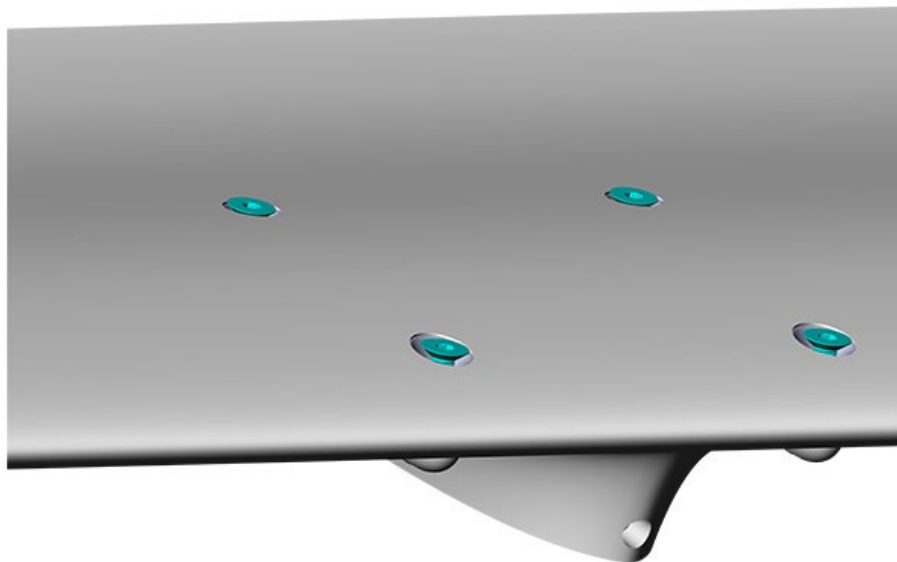
INFORMATION: The holes in the Rear Foil should align with that in the Shoe Assembly and must be clear of any debris or obstruction. The rounded part (leading edge) of the Rear Foil must face forward, and similarly the rounded part (with retained fixing bolt) of the Shoe Assembly must face forward.

1.2 Apply Tef-Gel (or equivalent) lubricant to the screw threads, fit the M6 Countersink Head Screws (length 30 mm) to the Shoe Assembly through the Rear Foil.

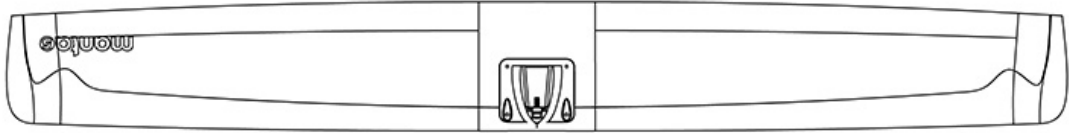
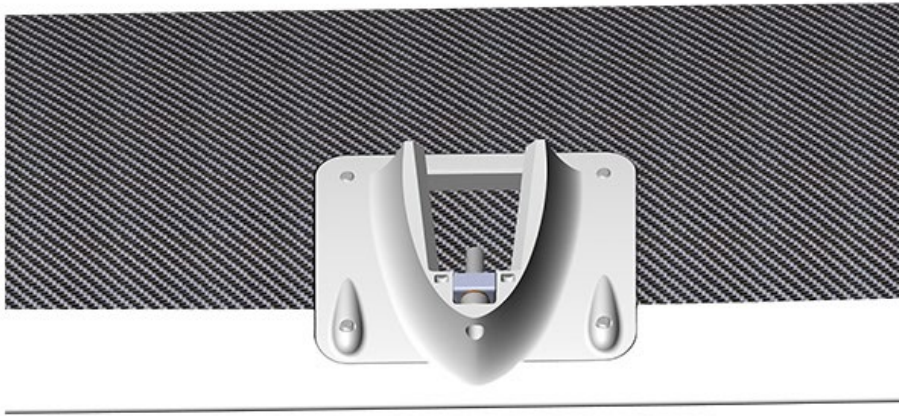


CAUTION: To avoid damage to screw heads, do not use a Hex Drive with rounded end for tasks where access is unrestricted.

1.3 Fasten the screws evenly to a Torque value of 5 Nm.



1.4 The Rear Foil with Shoe Assembly can now be turned over with the Shoe Assembly on top. Perform one last check to ensure the Rear Foil and Shoe Assembly orientation is correct.



Watch video on how to install below: